



# Nicole Sibi Immobilier

☎ 04 68 80 30 62

✉ sibi.nicole@orange.fr

www.nicolesibimmobilier.com

€ 129 000

**Buying village house**

**4 rooms**

**Surface : 68 m<sup>2</sup>**

**Surface of the living : 23 m<sup>2</sup>**

**Surface of the land : 134 m<sup>2</sup>**

**Year of construction : 1949**

**Exposition : Ouest**

**View : Citadine**

**Hot water : Electrique**

**Inner condition : a refresh**

**External condition : good**

**Couverture : tiles**

**Amenities :**

Simple vitrage

2 bedroom

1 bathroom

1 WC

1 garage

**Fees and charges :**

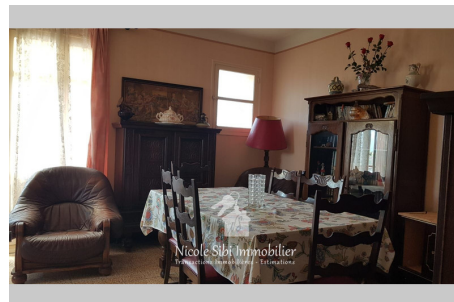
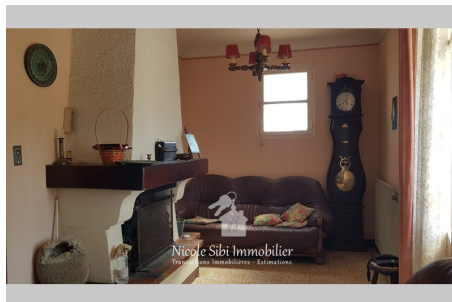
129 000 € fees included

22/12/2024 - Prix T.T.C



## Village house Saint-Féliu-d'Avall

In a village with all amenities, 10 minutes from Perpignan and 20 minutes from the beach, 2-sided village house to refresh Ref. : 891V416M - Mandat n°668



Nicole Sibi Immobilier - 32 Rue Principale, 66130 Corbère - Tél: 04.68.80.30.62

sibi.nicole@orange.fr - Port: 06.09.01.94.96

sibi.stephane@orange.fr - Port: 06.04.13.51.52

RCS 752 554 964 Code NAF 6831 Z - SIRET 752 554 964 00029 tribunal de Perpignan

Document non contractuel - Barème de prix disponible sur notre site internet